

# Party Wall DPC

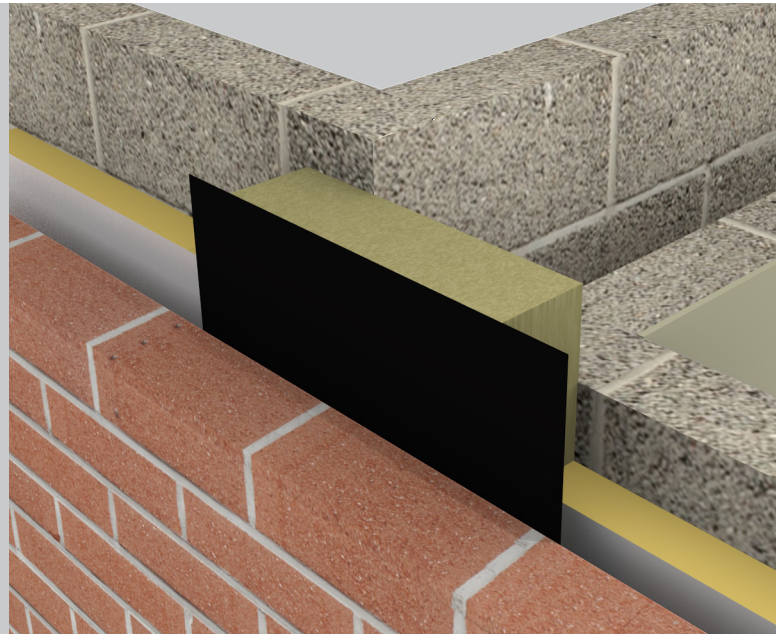


cavity fire barrier  
for masonry wall junctions



## key features

- » Up to four hours fire integrity
- » Specified in semi-detached, apartments and major projects
- » Complies to Robust Detail Part E and Building Regulations
- » Can be manufactured to suit cavity widths up to 300mm
- » Easy to install



## Application

ARC Party Wall DPC enables the closing of an external cavity at either party wall or party floor junctions where building regulations require the use of a mineral wool closer for acoustic insulation purposes.

## Installation

ARC Party Wall DPC is designed to be friction fitted at the party wall junction within a masonry cavity as the brick and block work progresses, no mechanical fixing is required. The DPC goes against the inner side of the external brickwork, while care should be taken butt joints are tightly fitted with no gaps remaining. The barrier must fully fill the cavity from brick to block, with any cavity insulation cut back.

## Fire Properties

ARC Party Wall DPC has been fire tested at Warrington Fire Research, achieving up to four hours fire integrity with traditional masonry brick and block construction. These tests comply with BS 476: Part 20: 1987 and BSEN 1366-4: 2006, using the test method stated EGOLF TC2 N421 (fire resistance for cavity barriers).

*Certifire scope: CF5403*

## Standards

ARC Party Wall DPC is manufactured using rockfibre mineral wool which achieves a fire classification of Euroclass A1 as defined in BS EN 13501-1, and conforms to BS EN 13162 and EN16001 Energy Management Systems. The DPC is manufactured in accordance with BS 6515.

ARC's rockfibre mineral wool insulation has a thermal conductivity of 0.037W/mK.

Don't take our word for it, see our certification...



Assessed to ISO 9001 & ISO 14001  
BRE Certificate No. 1227



## Party Wall DPC

### Storage and Packaging

ARC Party Wall DPCs are supplied in polythene packs which are designed for transporting and protecting the products. It is not recommended that the packs are stored in direct sunlight. When storing the barriers for longer periods of time it is recommended that the product should be stored indoors, or under cover.

### Acoustic Properties

The rockfibre mineral wool insulation used in the manufacture of ARC Party Wall DPC has the following acoustic absorption properties. Figures quoted were achieved with a solid backing.

Thickness	125Hz	250Hz	500Hz	1000Hz	2000Hz	4000Hz
40mm	0.19	0.46	0.79	0.92	1.00	1.00
100mm	0.57	1.00	1.00	1.00	1.00	1.00

Part E Robust Details compliance:

	Separating Wall/ Party Wall	Separating Floor
Masonry	E-WM 1-21	N/A
Concrete	N/A	E-FC 1-14

### Environment

No CFCs or HCFCs are involved in the manufacturing process of ARC's rockfibre mineral wool insulation. The material presents no known threat to the environment and is classed as ODP and GWP zero.

ARC Party Wall DPC has a Green Guide rating of A+.

### Health and Safety

ARC Building Solutions has an approved Health and Safety Policy and is committed to working and supplying products safely. ARC's rockfibre mineral wool is not classed as a possible human carcinogen. We have assessed products as required by Substances Hazardous to Health Regulations (COSHH). An ARC COSHH data sheet is available and can be downloaded from ARC's website.

### Non-Standard Applications

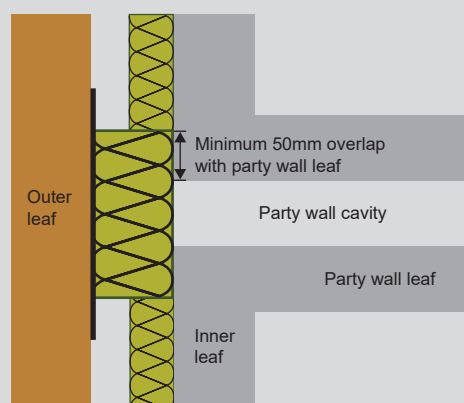
ARC Party Wall DPC is certified for use in masonry applications, where the outer leaf is brickwork and the inner leaf is either blockwork or concrete floor slab.

Where usage falls outside of this scope, for example when used with external cladding, or with an internal metal frame system, performance of the fire barrier will depend upon the structural integrity and fire performance of the surrounding construction. The suitability of the material for use with a fire barrier should be confirmed by the cladding or system manufacturer before use, with particular attention paid to any possible deflection.

Please note that for applications outside of the standard masonry application, or not in accordance with the Certifire scope, both Certifire certification and fire ratings stated on this datasheet do not apply.

### Party Wall Junction

ARC's Party Wall DPC is designed for use at the party wall junction, and should be fitted with a minimum 50mm overlap with the party wall leaf either side of the party wall cavity. At 250mm wide, Party Wall DPC will suit up to a 150mm party wall cavity.



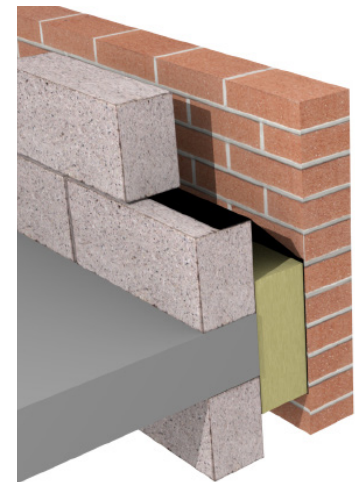
## Dimensions & Packaging Specification: Vertical Applications

Product Code	Suitable for Cavity Width	Dimensions	Pack Qty	Packs Per Pallet	Fire Rating
PW50	50mm	50 x 260 (340 DPC) x 1200mm	12	14	4 hrs
PW75	75mm	75 x 260 (340 DPC) x 1200mm	8	14	4 hrs
PW85	85mm	85 x 260 (340 DPC) x 1200mm	6	14	4 hrs
PW90	90mm	90 x 260 (340 DPC) x 1200mm	6	14	4 hrs
PW100	100mm	100 x 260 (340 DPC) x 1200mm	6	14	4 hrs
PW115	115mm	115 x 260 (340 DPC) x 1200mm	4	14	4 hrs
PW125	125mm	125 x 260 (340 DPC) x 1200mm	4	14	4 hrs
PW140	140mm	140 x 260 (340 DPC) x 1200mm	4	14	4 hrs
PW150	150mm	150 x 260 (340 DPC) x 1200mm	4	14	4 hrs
PW175	175mm	175 x 260 (340 DPC) x 1200mm	4	14	4 hrs
PW200	200mm	200 x 260 (340 DPC) x 1200mm	4	14	4 hrs
PW250	250mm	250 x 260 (340 DPC) x 1200mm	2	16	4 hrs
PW300	300mm	300 x 260 (340 DPC) x 1200mm	2	14	4 hrs

Can't find your size? ARC Party Wall DPC can be manufactured to suit any cavity width up to 300mm. Contact us for more information.

## Dimensions & Packaging Specification: Horizontal Applications

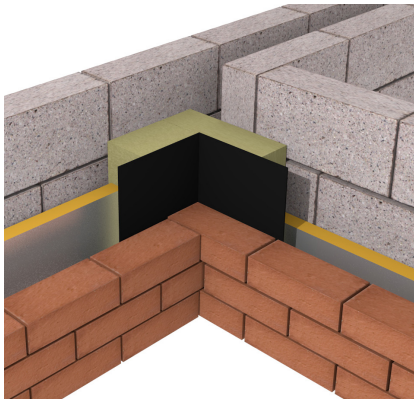
Product Code	Suitable for Cavity Width	Dimensions	Pack Qty	Packs Per Pallet	Fire Rating
PW50H	50mm	55 x 260 (650 DPC) x 1200mm	12	14	4 hrs
PW75H	75mm	80 x 260 (650 DPC) x 1200mm	8	14	4 hrs
PW85H	85mm	90 x 260 (650 DPC) x 1200mm	6	14	4 hrs
PW90H	90mm	95 x 260 (650 DPC) x 1200mm	6	14	4 hrs
PW100H	100mm	105 x 260 (650 DPC) x 1200mm	6	14	4 hrs
PW115H	115mm	120 x 260 (700 DPC) x 1200mm	4	14	4 hrs
PW125H	125mm	130 x 260 (700 DPC) x 1200mm	4	14	4 hrs
PW140H	140mm	145 x 260 (700 DPC) x 1200mm	4	14	4 hrs
PW150H	150mm	155 x 260 (700 DPC) x 1200mm	4	14	4 hrs
PW175H	175mm	180 x 260 (700 DPC) x 1200mm	4	14	4 hrs
PW200H	200mm	205 x 260 (700 DPC) x 1200mm	4	14	4 hrs
PW250H	250mm	255 x 260 (750 DPC) x 1200mm	2	16	4 hrs
PW300H	300mm	305 x 260 (750 DPC) x 1200mm	2	14	4 hrs



ARC Party Wall DPC is also available for installation horizontally within the external cavity along party floor edges.

## Dimensions & Packaging Specification: L-shape

Product Code	Suitable for Cavity Width	Dimensions	Pack Qty	Packs Per Pallet	Fire Rating
PW50L	50mm	50 x 260 x 260 (500 DPC) x 1200mm	12	10	4 hrs
PW75L	75mm	75 x 260 x 260 (450 DPC) x 1200mm	8	10	4 hrs
PW85L	85mm	85 x 260 x 260 (430 DPC) x 1200mm	6	10	4 hrs
PW90L	90mm	90 x 260 x 260 (420 DPC) x 1200mm	6	10	4 hrs
PW100L	100mm	100 x 260 x 260 (400 DPC) x 1200mm	6	10	4 hrs
PW115L	115mm	115 x 260 x 260 (370 DPC) x 1200mm	4	10	4 hrs
PW125L	125mm	125 x 260 x 260 (350 DPC) x 1200mm	4	10	4 hrs
PW140L	140mm	140 x 260 x 260 (320 DPC) x 1200mm	4	10	4 hrs
PW150L	150mm	150 x 260 x 260 (300 DPC) x 1200mm	4	10	4 hrs
PW175L	175mm	175 x 260 x 260 (250 DPC) x 1200mm	4	10	4 hrs
PW200L	200mm	200 x 260 x 260 (200 DPC) x 1200mm	4	10	4 hrs
PW250L	250mm	250 x 300 x 300 (200 DPC) x 1200mm	2	10	4 hrs
PW300L	300mm	300 x 350 x 350 (200 DPC) x 1200mm	2	10	4 hrs



The ARC L-shaped Party Wall DPC is suitable for use where the party wall is staggered.